

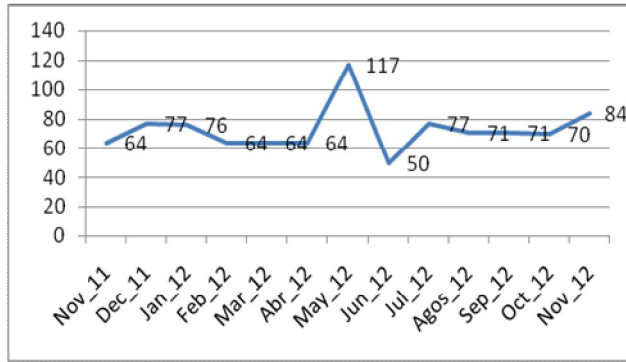
SITUATION REVIEW NOVEMBER 2012

ISSUES IN FOCUS THIS MONTH:

- ▶ CPD-RDTL movement
- ▶ Actions around 'Group 51'
- ▶ Violence by people disguised in black
- ▶ Tension on the Oe-cusse border

ISSUES REQUIRING ATTENTION

Total Incidents Recorded



Full details of all incidents available on:
www.belun.crowdmap.com

ISSUES REQUIRING ATTENTION

CPD-RDTL Movement

The political movement CPD-RDTL has gathered around 5000 of its members in Fatuberlihu sub-district of Manufahi, with additional members gathered in Bobonaru and Lautem Districts. This is causing concerns among communities due to their use of military uniforms and carrying of weapons including machetes and swords, as well as the use of areas of land. Despite the fact that the majority of land used is formally the property of the state, the community still consider this to be cultural community land which they have the right to access for animal grazing and agricultural purposes. In Timor-Leste's Constitution, article 146 permits only one defence force (the F-FDTL), and in 2012, the Government decreed resolution number 38/2012 restricting the use of official uniforms inside the country to the F-FDTL, PNTL, Migration Service, Prison Guards and National Park and Forest Rangers. Because of this any people or groups using military uniforms are directly contravening the Government.

This issue came to the attention of the Government and President, including the Chief of the F-FDTL, who hosted a meeting with the CPD-RDTL and the community of Fatuberlihu so that the objectives of the CPD-RDTL could be made clear. Following this dialogue, the community of Fatuberlihu stated they remained opposed to the presence of CPD-RDTL; however the movement stated that it has no intention of leaving Fatuberlihu. As the dialogue did not bring about a resolution, the Government has tasked the F-FDTL with managing the situation in Fatuberlihu. The leader of the F-FDTL has stated his belief that resolving the situation will not be easy (Timor Post 14/12/12).



President of the Republic Taur Matan Ruak holds talks with CPD-RDTL

The Government needs to intervene when people or groups contravene the Constitution or the Law; however Belun also recommends that government also give consideration to position initiatives from CPD-RDTL, whose objectives contribute to community development through cooperative farming activities. With this objective, the Government can identify areas of available state land to be allocated to a pilot study, so that an offer can be made to CPD-RDTL to use the land to continue their agricultural cooperative.

GROUP-LED VIOLENCE AND USE OF POISON

Group '51'

Monitoring by Belun revealed ten incidents during November related to Group '51', with many rumours and accusations between people and families (the name refers to the requirement for a single member to gather five followers before he may be endowed with supernatural powers after drinking certain potions). The attraction of the group is that it offers people magical powers, wisdom and good opportunities such as employment, business success, and the ability to fight without the possibility of injury or death.

These suspicions fueled a rise in conflict levels in Ermera District, including Letefoho sub-district (7 incidents), Hatolia (1), Gleno (1) and also Liquiça District, sub-district Bazartete (1). In Ermera District, Suku Dukurai, sub-district Letefoho, two men were drinking wine together, when one returned to his home and suddenly died. The dead man's family suspected that the drinking partner was involved with Group 51, and intentionally caused his death. Similarly in sub-district Hatolia, a man returned home and died after eating together with another man. The family in this case reacted by assaulting the suspected man, causing serious injuries. Elsewhere, in sub-district Bazartete (Liquiça), people allegedly involved with groups called "521" and "551" were involved in an incident where stones were thrown at their home, resulting in damage to the house and possessions. The incidents and

SITUATION REVIEW: NOVEMBER 2012

suspicion have resulted in a decline in economic activity at the local markets.

To respond to this issue, Belun has worked with the local parish priest, police and our Belun's monitors and networks in Letefoho to intercept the rumours being spread through the community, especially amongst youth. Belun has published recommendations to the Government, Police, Church and community to encourage actions to prevent any escalation in violence.

Ongoing impact of the poisoning in Lautem

In Lautem District, the poisoning of a number of children at the primary school in Iralafae (Los Palos) on 19 October 2012 continues to impact the community, who remain suspicious of one another, bring their own water from home to ceremonies, and will not eat pre-prepared food. It appears the existing laws are making the arrest of poisoners difficult as owners of poison cannot be arrested preemptively unless poison is used to harm others. Nonetheless the police should follow up on the arrests made in relation to the Iralafae incident and expedite processing through the formal justice system. This will provide a deterrent to others who have acquired poison with ill intent.

Violence from people disguised in black and rumours of "Ninjas"

In Ainaro District during November, there were concerns and fears from communities related to the actions of unknown groups disguised in black in order to commit acts of violence in the communities by the cover of night. These have included physical assaults in the streets, robbery and arson. Monitoring indicated four related incidents in November, all occurring in Ainaro Vila. One incident resulted in injuries in Aldeia Jakarta, Suku Mauulo, at 8pm, when a female home owner heard her dog barking and went out of the front door to look, she was then rocks were thrown by a group of unknown people wearing black, injuring the woman. In a separate incident in Suku Casa, around midnight unknown people in black attempted to break down the front door of a family home, but the home owner managed to raise the alarm. Shortly after, the house was set on fire.

CONFLICT ON THE BORDER

Community Concerns along the border with Indonesia

Local authorities and Traditional Elders in Oecusse District have been attempting during recent months to conduct traditional mediations between communities on both sides of the border to strengthen relations and prevent escalations of violence on the border. However, these reconciliation processes have continued to be interrupted, resulting in continuing incidents (August-November 7-2-1-3). The three incidents in November all occurred in sub-district Nitibe. Two of these occurred as retaliation attacks between community members on either side of the border. Data suggests that on 25/11/12, five former-Timorese citizens now living across the border in Oepoli, Indonesia, illegally crossed the border to fish from the ocean at low tide and collect coconuts.

PNTL arrested and deported these people. This incident resumed two days later at a market in Oepoli, Indonesia, where the Indonesia-based Timorese physically assaulted people from Bene-Ufe Oecusse who were illegally in Indonesia to attend the market. These situations will likely continue to occur because the numbers of UPF (Border Police Unit) responsible for monitoring border crossings, remain severely limited.

OTHER CRIMES

Other issues:

Youth violence: Increased from 16 (Oct) to 26 incidents (Nov), Dili (13), Viqueque (2), Oecusse (2), Manatutu (2), Covalima (2), Lautem (2), Baucau (1), Liquiça (1), Manufahi (1).

Alcohol-related violence: (5), Viqueque (2), Liquiça (1), Manufahi (1), Dili (1).

Land disputes: (6), including in Oecusse (2), Viqueque (1), Lautem (1), Baucau (1), Aileu (1).

Intra-family violence: (7), Liquiça (3), Manufahi (1), Oecusse (1), Manatutu (1), Lautem (1).

Violence between students: (2), Viqueque (1), Ermera (1). **Violence by Martial Arts gangs:** (2), Manatutu (1) no Liquiça (1). **Conflict between**

Farmers: (1) Manufahi. **Assaults by Unknown Persons:** (2) Oecusse. **Other crime:** (15).

SITUATION REVIEW: NOVEMBER 2012

RESPONSES TO CONFLICT

Visit to the districts by the President

During November, the President, together with some members of parliament, visited Manatutu, Baucau, Lautem and Viqueque, with a focus on listening to the concerns of the community. The President's visit should be an example for all members of parliament in their interactions with the community.



Belun's Land Dispute Mediation team conducts a mediation in Dili

Belun's Community Conflict Prevention during November 2012

- The CPRN in Remexio sub-district (Aileu) facilitated a dialogue about the administrative land borders between two sukus.
- Belun's Land Mediation and Dispute Resolution Program successfully facilitated the mediation of land disputes for five sets of claimants.

RECOMMENDATIONS

Ministry of Justice, through the Directorate of Land and Property

- Identify state property available to offer to CPD-RDTL to allow them to continue their agricultural cooperative activities.

Secretary of State for Security

- Evaluate the recommendations provided by civil society, including the community of Oecusse, who have expressed through electronic media, newspapers, and publications for a number of years the need to strengthen the numbers and resources of the UPF (Border Patrol Unit) particularly in Naktuka area of Nitibe sub-district, Oecusse.
- Police must take action to enforce laws preventing people or groups outside the F-FDTL wearing military uniforms.

SITUATION REVIEW: NOVEMBER 2012

RECOMMENDATIONS

National Police of Timor Leste

- Continue investigations to identify and prosecute those guilty of poisoning the students in Lautem.
- Investigate rumours concerning “group 51” and “group 521” in Ermera and Liquiça respectively.
- Increase patrols at night in areas where the community does not feel safe.

Civil Society

- Assist in community education campaigns that provide clear information and prevent rumours and superstitions from causing concern.

Conflict Prevention and Response Network at the sub-district level

- Cooperate with local authorities, leaders, the church, civil society and local government to identify sources of tension which arise so that they can be dealt with in early stages.

ABOUT THIS SITUATION REVIEW

This document has been produced with the support of the European Union through the Instrument of Stability and GIZ/BMZ in cooperation with the Ministry of Youth and Sport. The contents and opinions in this document are the sole responsibility of Belun and CICR and do not reflect the opinions or positions of donors. This document reports on key issues related to violent incidents and trends emerging from data collected through Timor-Leste’s Early Warning, Early Response (EWER) system during October 2012. We welcome further information which may clarify or update data acquired through EWER. Please email EWER Program Manager Bylah Da Costa: bylah.belun@gmail.com. Images © Izalde Pinto & Alexandre Andrade, November 2012.